



**2004
ANNUAL REPORT**

WESTERN IRRIGATION DISTRICT



ANNUAL MEETING

**April 7, 2005 – 1:30 P.M.
Strathmore Travel Lodge
350 Ridge Road, Strathmore**

Financial Statement and Annual Report 2004

INDEX

Notice of Annual Meeting.....	Page 2
Chairman’s Report, 2004.....	Page 3
Mission Statement.....	Page 4
Board of Directors.....	Page 4
General Manager’s Report for 2004.....	Page 5
Chestermere Land Office	Page 6
Operations & Maintenance Activities.....	Page 7
Confronting Water Scarcity.....	Page 9
Stormwater Capital Works Fund.....	Page 11
Irrigation Rehabilitation Program.....	Page 13
2004 Crop Data Summary.....	Page 17
Irrigation Acres Movement within the District.....	Page 18
Western Irrigation District Organizational Chart, 2004.....	Page 19
Gregory, Harriman & Associates Professional Accountants Financial Statements.....	Page 20

Form 1 NOTICE OF ANNUAL MEETING

Irrigation Districts Act Forms Regulations (Section 42(2)(b))

Take Note that the annual meeting of the Irrigators of the Western Irrigation District will be held at the Strathmore Travel Lodge, Strathmore, Alberta on the 7th day of April 2005 at 1:30 p.m. to:

- (a) Present annual reports of:
 - (i) the Chair on behalf of the Board,
 - (ii) the Manager,
 - (iii) the Auditor of the District, and
 - (iv) the Maintenance of Irrigation Works for the District, and,
- (b) to conduct any other business.

James Webber
General Manager

NOTICE OF ELECTION

Irrigation Districts Act (Section 53)

Local Authorities Election Act (Section 35, 46)

WESTERN IRRIGATION DISTRICT in the PROVINCE OF ALBERTA

Notice is hereby given that an election will be held for the filling of the following offices:

Office(s)	Number of Vacancies	Division Number
Director	1	2
Director	1	5

Voting will take place on the 8th day of April 2005, between the hours of 10:00 am and 8:00 p.m. The voting station will be located at Western Irrigation District office at 201 Pine Road, Strathmore, Alberta

James Webber
Returning Officer

Voter Information for Poll

Irrigation Districts Act, Section 56:

- (2) **A person is eligible to vote at an election of the district only if that person is**
 - a) an irrigator recorded on the most recent assessment roll of the district as an irrigator of that district, or
 - b) appointed under a written authorization as an agent for a body corporate that is an irrigator of the district to vote on behalf of the body corporate.
- (3) An irrigator may cast only one vote at an election.
- (4) Notwithstanding subsection (3), an Irrigator may also cast a vote on behalf of a body corporate if that irrigator is appointed as an agent for the body corporate in accordance with subsection (2)(b).
- (5) Where more than one irrigator is the owner of one or more parcels, the number of irrigators who may vote may not exceed the number of parcels.
- (6) An irrigator may vote in any voting subdivision of the district or electoral division, as the case may be, if
 - (a) the irrigator's name appears on the list of electors for the district or electoral division, or
 - (b) the irrigator makes a statement in the form prescribed in the regulations in the presence of an officer at the voting station that the irrigator is eligible to vote as an elector in the district or electoral division.

An Irrigator:

Section (1)(x): "irrigator" means an owner of a parcel with irrigation acres.

Section 57(3):

"an irrigator must vote in the electoral division in which that irrigator has irrigation acres, or if that irrigator has irrigation acres in more than one electoral division, the division in which the irrigator has the largest number of irrigation acres."

Note:

In the event that there is only one nomination for an electoral division, the nominee becomes elected by acclamation and balloting becomes unnecessary.

Irrigators who are not sure which division applies to their lands, may check the listing of polling divisions contained in this announcement, or may contact the office of the Western Irrigation District.

CHAIRMAN'S REPORT, 2004

The Board and Staff continue to make progress with the District's financial picture. It was positive that in 2004 the District did not operate at anytime in the red. A positive bank balance was maintained at all times. In fact the year was ended on a surplus. We should not however become complacent, as we have done well in the short term, but we must address the long-term. As our costs rise this surplus will be eroded. The Board is very focused on what is happening 5 to 10 years from now.

Much of our revenue is from short-term agreements, secondary to our core business. The only real security can be the revenues derived from the irrigation water rates. That is why the legal activity to secure the terms of the old Federal Water License is so important. Many provincial studies have indicated that there needs to be 120,000 to 130,000 paying irrigation acres to provide the critical mass of tax monies to pay for the maintenance of the district. The 95,000 irrigation acres we are capped at today will always put the WID at a financial disadvantage. To run those extra acres, there has to be a sufficient water supply. The 1963 Provincial license allocation would be insufficient to meet those goals. In 2004 the District recommenced the legal action to address these issues, and currently discussions are underway to explore options.

The provincial water strategy discussions encouraged the public to consider long-term water availability. This is a subject constantly addressed by irrigation districts and their rural dependants. To an urban audience the issue raised a new awareness, questions and challenges. It is expected that we will hear much more of economic instruments, and the first-in-time-first-in-right legal baselines. The district takes every opportunity to educate our neighbors as to the irrigator's way of life, and the economic and aquatic benefits irrigated lands bring to the province.

In our 60th year as an irrigation district, I would like to close with thanks to the Directors and Staff for an excellent job in continuing the improvements to the WID.

Submitted on behalf of the Board of Directors

Henry Colpoys
Chairman

MISSION STATEMENT:

To provide a reliable delivery system to water users in an efficient manner.

Electoral Divisions of the Western Irrigation Board

Division 1 – Dale Dolphin – Term expires 2007
Townships 21, 22, 23 and 24 in Ranges 20, 21 and 22

Division 2 – Henry Colpoys – Term expires 2005
Townships 22, 23 and 24 in Ranges 23 and 24 and Township 24 in Range 25

Division 3 – Wayne Risdon – Term expires 2006
Townships 21, 22 and 23 in Ranges 25, 26, 27 and 28 and Township 23 in Range 29

Division 4 – Barrie Clayton – Term expires 2007
Township 24 in Ranges 26, 27, and 28 and Townships 25, 26 and 27 in Ranges 25, 26, 27 and 28

Division 5 – Dale Dahm – Term expires 2005
Townships 25, 26 and 27 in Ranges 21, 22, 23 and 24



Director: Dale Dahm **Director:** Barrie Clayton **Vice Chairman:** Wayne Risdon

Chairman: Henry Colpoys **Director:** Dale Dolphin

General Manager's Report for 2004

The 2004 irrigation season was notable for its rainfall events. Though precipitation did not fall evenly across the WID, in certain areas the rainfall was significant. This is reflected in the irrigation record where it shows that of the 94,843 contracted irrigation acres on the water role, only 54,666 acres actually requested irrigation service. One would offer that the cost of energy being such a significant farm cost was a decision factor. The gravity canal system still had to run to support those who were irrigating, and water elevations still had to be met. It resulted in higher return flows and less water efficiency at the farm gate. In real terms this was not significant to the Bow River as it was in a constant state of high flow. In water efficiency and conservation terms it resulted in numbers for a poor year. Until significant lengths of the District's canals are rehabilitated, we do not have the tools yet to correct this situation.

A significant rainfall year also creates urban stormwater flows. The Calgary stormwater additions were a feature of 2003, with the enlargement of the main Secondary 'A' canal system to handle surge flows. A significant expenditure was made in 2004. There were three major civil engineering contracts commenced involving \$4.0 million of the \$5.7 million Calgary settlement. These contracts were not without their difficulties. The economic boom that southern Alberta enjoys resulted in few contractors being available. There has also been a noticeable rise in contract pricing. As a result the specifications of the intended works had to be reduced to fit within the available budget.

Accelerated urban growth also impacts new town areas such as Chestermere. Considerable time and effort, in cooperation with the Town, was directed to improving stormwater management. Chestermere Lake is the critical headwork of the WID. Previously much effort went into identifying and then correcting the risks of storm surges. Water quality issues were then addressed. With so much urban stormwater being added to the lake, there was a concern for the long-term water quality impacts for irrigation and recreation. Chestermere and the WID are working together to create a stormwater management plan that will allow Chestermere the further growth it seeks, but without reducing water quality. Such considerations will also be applied to the future growth of northeast Calgary, Rocky View MD and Wheatland County. The technical advances made here to address these issues can and will be applied to all urban areas.

In closing, I would like to thank the Board of Directors for their continuing support in this 2004 year. Thanks to the provincial government for their financial support, and our suppliers and contractors for their high level of service. A special thank you to WID staff, for the time and effort in continuing to reduce expenses, and their innovations to make the available dollars go further.

Respectfully submitted

Jim Webber
General Manager

CHESTERMERE LAND OFFICE

The first in a number of steps to address the long-standing issues associated with encroachment on WID-owned lands around Chestermere Lake was taken in November 2003. At a public forum hosted by the Chestermere Lakefront Owners Association, the District's General Manager presented the results of a shoreline study that reported on issues including ownership, water quality and quantity, submerged vegetation, silting, recreational safety, and shoreline encroachment and erosion.

In July 2004, the District opened a small office in Chestermere. The primary objectives for the office were to determine the extent and size of encroachment by each lakefront property owner, to communicate and deliver on the Board's commitment to the adage of "use what you own or own what you use", and to be available to meet with individual lakefront property owners. The Board's objectives are targeted for completion within 3 years. The office is staffed with one full-time professional and a part-time administrative assistant.

Based on the professional opinion of property appraisers and considering the principles of risk management and fiscal responsibility, the Board agreed to offer to sell or lease the encroached land to those who have been and continue to use it. This action was taken not only to manage the risk of liability associated with ownership and use of that land, but also to realize a financial return from a portion of the reservoir that is not needed to convey water to the District's ratepayers. The Land Office, as the "face" of the WID in the Chestermere community, presented the District's offer to the Chestermere Lakefront Owners Association's annual general meeting in late-September.

Using aerial photography and modest technology, 322 of the 394 lakefront properties were identified with an encroachment on WID-owned land. Located on the east and west sides of the reservoir, south of Highway 1A, almost 600,000 square feet of land to water's edge is involved. In late-October, letters were mailed to all affected property owners, giving each an aerial photograph of their property and the encroached land with an estimate of the size of their encroachment to water's edge.

Since the District's November fiscal year-end, the Board has met with representatives of the Chestermere Lakefront Owners Association and the Land Office Manager has spoken with many of the lakefront residents to discuss their questions and concerns with the District's offer. These meetings have been informative, constructive and positive for both organizations and the individuals involved.

Submitted by the Chestermere Land Office

Keith Crowder
Chestermere Land Manager



Photo by Claudette Lacombe

Operations & Maintenance Activities

"The Never-Ending Cycle of Maintenance"

Silt removal on previously rehabilitated main canal.



"Heavy Maintenance" Of Lateral Canal

This stretch of approximately 1500 meters of high demand canal required rehabilitation due to severe bank sloughing and inadequate water controls. District forces conducted minor vegetation removal to facilitate the movement of material to areas along the canal as required. Structures were upgraded along the way and the canal was reshaped. Unfavorable weather conditions prevented the final completion of this project in the fall. Minor trimming and fencing will resume in spring 2005. Additional reaches of this canal will be addressed in similar fashion in upcoming seasons.



Regular Ditch-Cleaning Of Lateral Canal

Severe siltation attributed to upstream erosion made for difficulty in providing water to downstream users. The topography of the area provides an ideal location for a future Irrigation Rehabilitation Program (IRP) pipeline, currently slated for installation within the next five years.



"Heavy Maintenance" Of Main Canal

District forces targeted two sizable "heavy maintenance" projects along main 'C' canal in 2004. These substantial maintenance tasks consisted of building banks, removing silt berms, reshaping slopes and armoring, structure upgrades, creating proper access and ultimately fencing, all as required. Approximately 8 km of canal was rehabilitated between the two jobs with more scheduled for the not too distant future.



2004 Maintenance Activity Summary

Ditch Cleaning	55 km
Bank Leveling	50 km
Tree Clearing	13 km
Canal Fencing	5 km
Delivery Installations	24 units
Drop/Check Installations	12 units
Canal Crossing Installations	9 units
Weed/Brush Control - Cattail Cutting	180 km
Weed/Brush Control – Chemical Spraying	400 km
Weed/Brush Control – Bank Mowing	50 km

2004 District Equipment Fleet

1994 Kenworth Tandem Gravel Truck with Pup
2002 Mack Tandem Gravel Truck with Pup
1997 Mack Tandem Tractor with Lowbed & JEEP
2003 John Deere 230 Excavator - Leased
1998 John Deere 230 Excavator
2001 Komatsu 220 Excavator
2002 Komatsu D61PX12 Dozer
1990 John Deere 970 Tractor
1994 John Deere 410 Backhoe
1996 John Deere 544 Loader
2002 Tip Trailer

Confronting Water Scarcity

Our water use and delivery system supports over 2,300 contracts consisting of many different types of water users, each with a different demand or water use requirement. Planning is essential to reduce future water use. The importance of measurement is vital as our water supply will be impacted by snow pack, glacial reduction, climate change and periods of drought. Ultimately, if we ever come to a time of water shortages, we will need to create the tools to account for the water use and be able to manage its use more efficiently.

Irrigation is far more complex than turning on a tap. Our canal network is an open gravity channel which, when the water is diverted from the Bow River can take up to 7 days for it to reach the end of the system. Once the water is turned on May 1, it doesn't stop flowing until we shut it off at the end of the season. As the water flows through our system there are water losses. Seepage and evaporation are major factors in our water management. This is one of the reasons why we ask all of the stakeholders to give us 48 hours notice, which gives us enough time to efficiently add or remove it from our canals. Any water that is diverted from the river falls under our Water License and is classed as water used.



Our water is a precious commodity

We are always striving toward efficiency through continuous improvement. We are trying to track future water use through automation, by giving us better control and measurement of the water entering into our system. We have also installed water measurement sites to measure how much water is spilling back to the rivers. Most importantly we have to assess the water use from all of the stakeholders so we actually know how much is being used. The balance of the water, we can then assume, is water loss as it moves through the system. With future rehabilitation and upgrading of the canal system we will reduce losses.

Our aim is to provide all water users with the best services that we can provide while being able to manage the water use more efficiently. The new technologies allow us to manage our system more effectively. In our efforts to continuously improve, we are asking for the cooperation from all stakeholders to work with us to improve the system. Having all water users order their water ON or OFF and by notifying your water supervisor of your water use, allows us the ability to better manage for the future. By planning ahead for your water use and giving us proper notice, we can all work together toward better water management practices and confronting water scarcity.

Please call to order your water on and off, your cooperation is greatly appreciated!

Dwight Gittel (Chestermere)
Don Brownlee (Carseland)
Brian Sander (Strathmore)

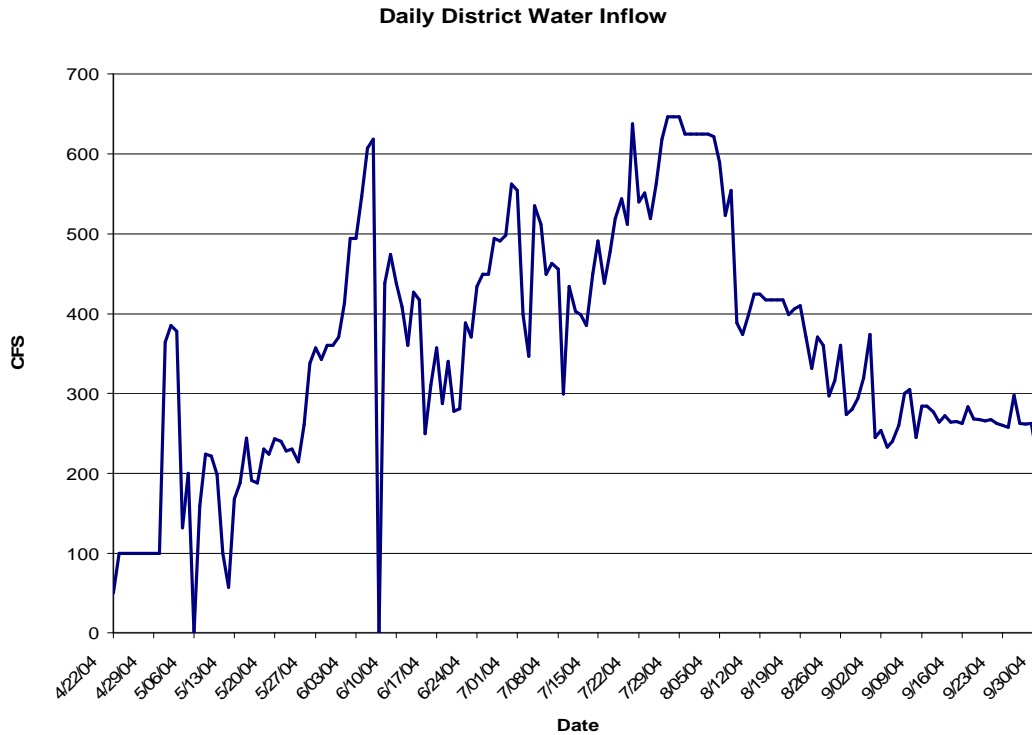
899-4638
899-4641
325-4601

Wes Sproule (Rockyford) 325-4640
Brad Walls (Gleichen, Cluny) 325-4642
Chris Premack (Crowfoot) 325-4639

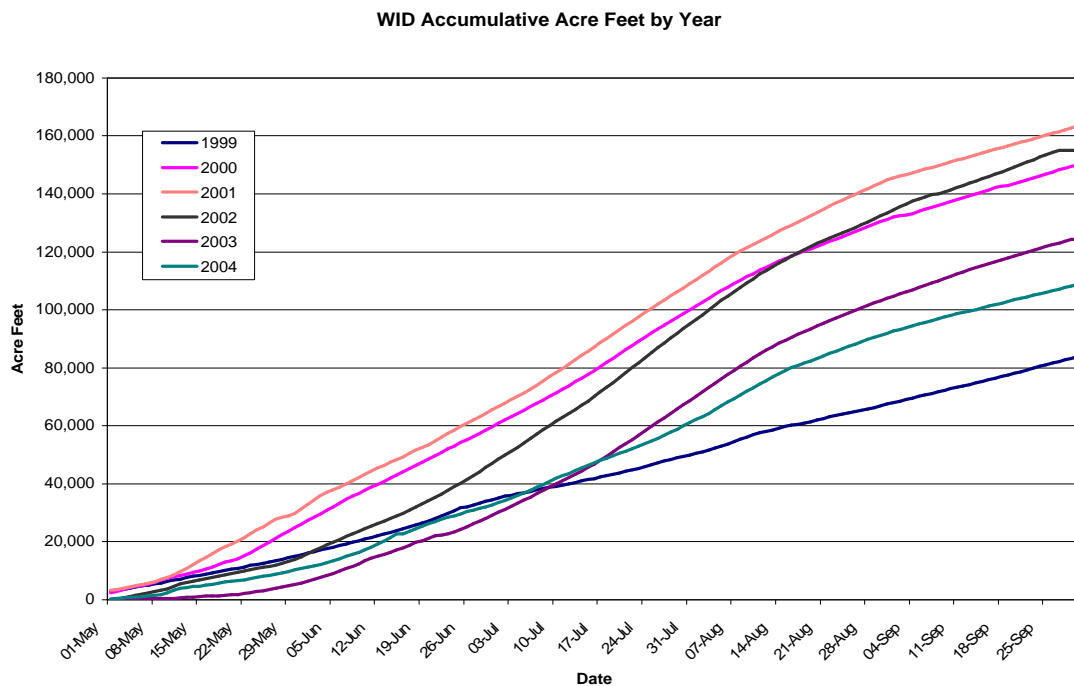
(March 2005)

Table 1 – 2004 Water Usage

The following chart presents the District's daily inflow data for the 2004 irrigation season.



The following chart compares the District's 2004 water usage to the previous five irrigation seasons.



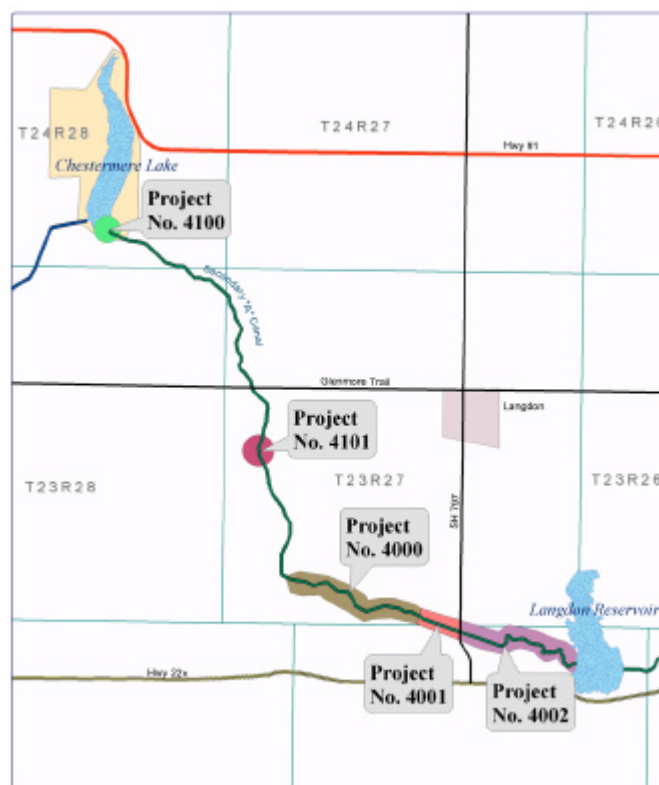
Stormwater Capital Works Fund

As referred to in the General Manager's Report, a \$5.7 million Capital Works Fund was established in 2003 for canal rehabilitation work on the Upper Secondary A Canal system. The major contract activity took place in 2004. Once completed in 2005, the District will have the benefit of full rehabilitation of its large works from Chestermere Lake to Langdon Reservoir. This money also allows for the acceleration of the District's long-term rehabilitation plan.

The following table summarizes the expenditure details of the Stormwater Capital Works Fund:

Project No.	Project Name	Schedule	Estimated Cost
4000	km 12.5 to km 16.9 Canal Rehab	2003/04	\$1,700,000
4001	km 16.9 to km 18.2 Canal Rehab	2004/05	\$1,400,000
4002	Km 18.2 to km 22.0 Canal Rehab	2004/05	\$1,200,000
4100	Secondary A Canal Headgate Rehab	2004/05	\$1,000,000
4101	Secondary A Canal Drop #1 Rehab	2004/05	\$400,000
Total			\$5,700,000

Project No. 4101 was withdrawn in 2004 due to bid prices exceeding available budgets. It will be addressed in a subsequent year. The following map highlights the locations of the five projects to be financed by the Stormwater Capital Works Fund.



Calgary Stormwater Fund Project Updates

#4000 – Secondary A Canal Rehab (km 12.5 to km 16.9)

This portion of A Canal was funded under the Stormwater Capital Works Fund. A private contractor completed the earthwork portion of the contract. District crews completed the final placement of 18,500 tonnes of gravel armour during January and February 2004.

All construction activities apart from final fencing have been completed. Legal surveys and discussions with adjacent landowners regarding the sale of excess WID right-of-way are ongoing.



#4001 – Secondary A Canal Rehab (km 16.9 to SH797)

Caliber Systems was awarded this construction contract, through tender, for the amount of \$1,375,000, which includes canal earthwork and a major new concrete drop structure to be built by Graham Construction. Work started on October 18, 2004. ATCO Pipelines had to relocate a significant pipeline in order to accommodate the rehabilitation work. Caliber's contract stipulates that all work is to be complete prior to the 2005 water season. As in the past, WID crews were assigned to haul and place the gravel armour slope protection during the January/February timeframe.

#4002 – Secondary A Canal Rehab (SH797 to Langdon Reservoir)

Caliber Systems was contracted to complete this section of canal for a negotiated price of \$665,000. Caliber will tackle this earthwork in tandem with the upstream #4001 canal rehab contract. The contractor predicted that all work under this contract would be completed prior to year-end. As in the past, WID crews will haul and place both gravel armour and riprap during the January/February timeframe.

#4100 – Secondary A Canal Headgate Structure Rehab

This contract was re-tendered to reflect a reduced scope of work. The downstream drop (#4101), mechanical trash racks and weed rakes were removed from the contract, as the original bid prices exceeded available budget. From a list of 12 concrete contractors, only two bids were received. The low bid from Chief at \$1,101,790 plus \$150,000 for the gate supply from Armttec, made for a total price of \$1,251,790 for the contract. All contract work will be completed prior to the 2005 water season.

Irrigation Rehabilitation Program (IRP)

The Irrigation Rehabilitation Program (IRP) continued as a major source of funding for rehabilitation work within the District this year. The Program is funded 75% by the provincial government with the remaining 25% contributed by the District. The total funds contributed this year for rehabilitation work approved by Irrigation Council was:

• Provincial government (75%)	\$1,746,946
• District (25%)	\$582,315
• TOTAL (100%)	\$2,329,261

In addition to the above funds contributed this year, the District's IRP account includes additional funds carried over from previous years.

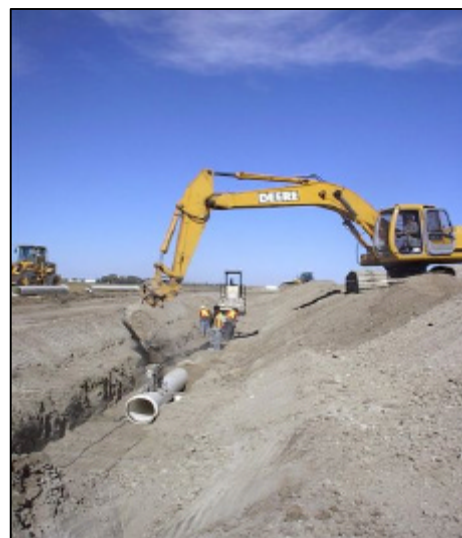
2004 IRP Project Summary

1. IRP 2003 – Sub lateral 81J7 Rehabilitation

The old earthen channel had many operational problems such as severe erosion, inadequate capacity, poor structures, seepage and access issues. The rehabilitation work involved eliminating the open ditch by installing 1,960 meters of PVC pipeline. The District was able to close 2,600 meters of ditch. Landowners transferred irrigation acres to utilize this project.



- Located 4 km northwest of Cluny
- Estimated Project Cost = \$532,000
- Total Project Cost to Date = \$440,000



2. IRP 1718-3 – Lateral 81E1-A Rehabilitation

This project was completed as the year 2004 project under the District's current Seepage Control Plan. The existing lateral suffered from severe erosion, inadequate capacity, access issues and significant seepage. Due to the landowner concerns about tree removal to accommodate rehabilitation and ditch closure, the District decided to move the Irrigation acres to be serviced by this pipeline. A 2.2 km long PVC pressure pipeline was installed as Phase 3 of the Barlow Pipeline. District crews completed the project construction in the fall.

- Located 6 km south of Strathmore
- Estimated Project Cost = \$746,000
- Total Project Cost to Date = \$405,000



3. IRP 1934 - South Cluny Canal Rehab

Finalization of the legal survey was completed in 2004. Final project expenditures relating to the construction contract, land acquisition and groundwater monitoring program will amount to a 9% increase on the original budget estimate. Expected savings during construction could not be realized due to ground conditions and an additional land purchase was required to accommodate the work at a cost of \$50,000.

- Located 9 km east of Gleichen
- Estimated Project Cost = \$550,000
- Total Project Cost to Date = \$597,000

4. IRP 1890 – Lateral 84T2 Rehabilitation

An automatic pipeline trash cleaner was installed on the inlet structure. In 2004 the district forces finished reclaiming abandoned ditches. Final surveying was completed.

- Located 7 km southwest of Rockyford
- Estimated Project Cost = \$830,000
- Total Project Cost to Date = \$790,900



5. IRP 1951 – Lateral 81D4D Rehabilitation

The inlet to the pipeline was finished in the spring of 2004 and the legal survey is complete.

- Located 10 km northeast of Carseland
- Estimated Project Cost = \$163,000
- Total Project Cost to Date = \$153,000

6. IRP 1997 - North A Lateral 82K2 Pipeline

This project was designed in 2004. The major problems of the existing system include deteriorated CSP and structures, erosion, seepage and access. The district plans to install 680 meters of 400 mm PVC pipe to reclaim 1200 meters of existing channel. It is hoped that the pipeline can be installed sometime in the spring prior to the 2005 water season.

- Located 1 km north of Strathmore
- Estimated Project Cost = \$179,000
- Total Project Cost to Date = \$40,720



7. IRP 2016 - Lateral 81 Drop Structure Replacements

This project was designed in 2004 with the design of the drop structure on A Canal near E Ditch (Gleichen/Cluny block). Construction is scheduled for Fall 2005.

- Located 6 km north 5 km west of Gleichen

8. IRP 2017 - Lateral 81 Drop Structure Replacements

Due to the poor condition of the existing structure, the Board has given approval for the replacement of this structure. A number of well-known irrigation concrete contractors were invited to bid on this tender. There was a lack of interest, and only one tender bid was received, however it exceeded the budget. The WID decided to perform maintenance on the structure, sufficient for the next irrigation season and re-tender in summer of 2005.

9. IRP 2018 - Sub lateral 81G6 E Ditch Pipeline

MPE Engineering commenced the engineering design in 2004, for a pipeline project. Landowner meetings will be conducted early in 2005 with construction scheduled for Fall 2005.

- Located 5 km north of Gleichen
- Estimated Project Cost = \$179,000
- Total Project Cost to Date = \$40,720

10. IRP 1903 - Water Measure Program

The district has an extensive list of return flow monitoring sites installed in 2002. They are stand-alone units mostly in remote locations. There have been technical challenges on these field units that have required some modifications. Some minor upgrades to monitoring sites and equipment were undertaken in 2004, using previously unused budget. Expenditures in 2004 were \$19,300.

11. IRP 2012 - Reservoir Study

Working in conjunction with Alberta Agriculture, the WID reviewed potential water storage sites. One of the greatest water conservation challenges for the WID is the lack of natural and available sites. One site was identified as having potential, and the engineering consultant performed a preliminary overview to identify land requirements and associated costs. The engineering work in 2004 was \$15,500.

Seepage Control Plan 2003-2007

The Western Irrigation District has prepared a Seepage Control Plan for the Years 2003 through 2007 in accordance with Section 164(1) of the Irrigation Districts Act. Currently the program is ahead of schedule.

The Plan addresses seepage in five areas:

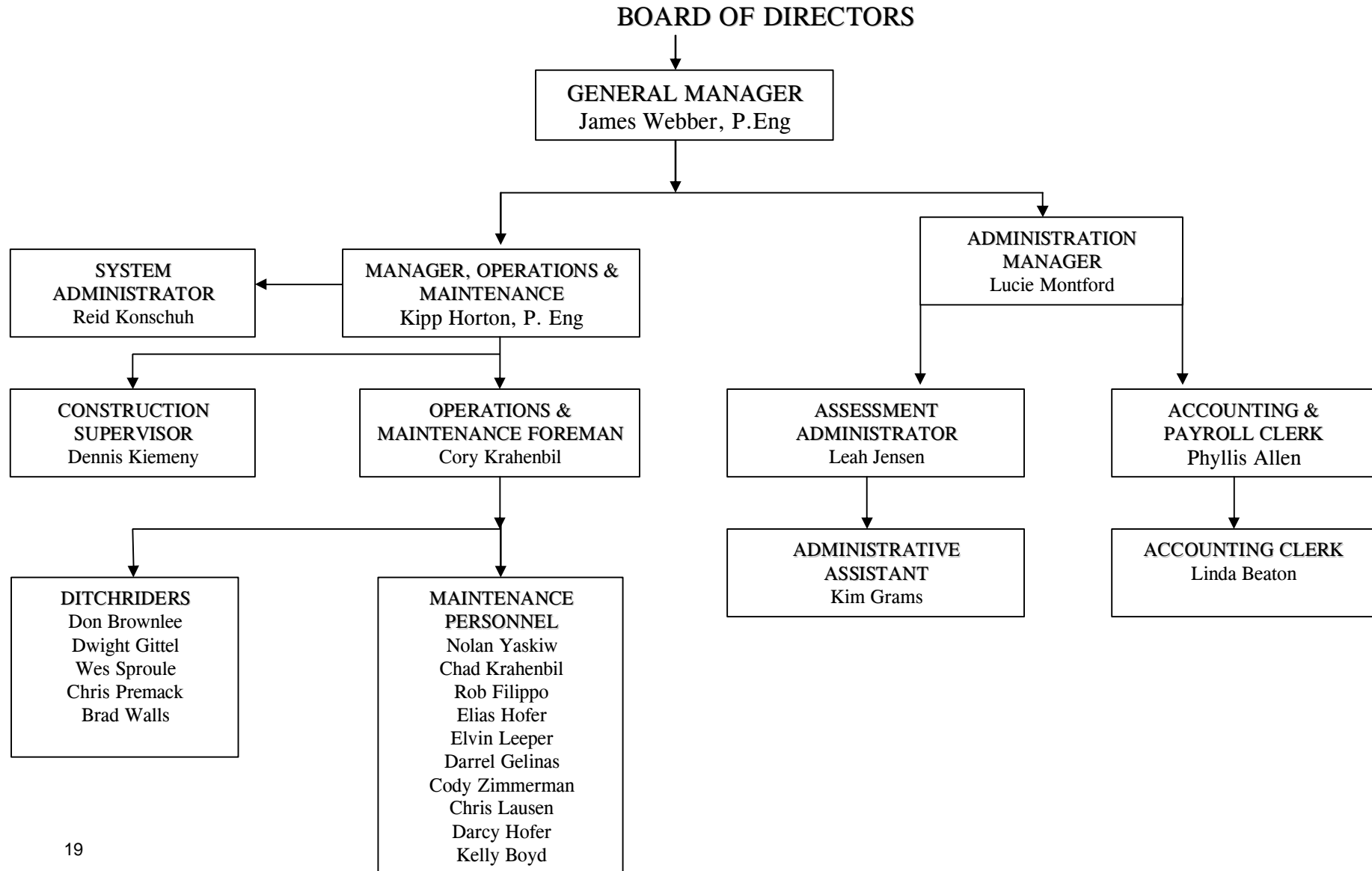
1. 2003 IRP 1934 Lateral 81: Sec. 24,25-22-22-W4 -completed
2. 2004 IRP 1890 Lateral 84T2: Sec. 12-26-24-W4 & Sec. 7-26-23-W4-completed
3. 2005 IRP 2003 Lateral 81J7: Sec. 7-22-21-W4 & Sec. 12,13,24-22-22-W4 -completed
4. 2006 IRP 2018 Lateral 81G6: Sec. 26,27,34,35-22-23-W4
5. 2007 IRP 1848 Lateral 82K15: Sec. 4,10-24-23-W4

2004 CROP DATA SUMMARY			
Crop Type	Irrigated Acres	Non Irrigated Acres	Total Acres
Alfalfa Silage	393	25	418
Alfalfa Hay	19,228	10,530	29,758
Barley	11,248	7,942	19,190
Barley Silage	8,219	1,631	9,850
Canola	3,280	3,027	6,307
CPS Wheat	1,086	1,978	3,064
Dry Peas	180	120	300
Green Feed		110	110
Durham Wheat	849	633	1,482
Flax	130		130
Grass Hay	1,078	1,497	2,575
Grass Seed	65	264	329
Hard Spring Wheat	671	2,030	2,701
Market Gardens	90	235	325
Misc	70	1,954	2,024
Nursery	661	719	1,380
Oats	663	522	1,185
Oats Silage	130		130
Pasture	5,682	8,131	13,813
Potatoes	285		285
Turf Sod	658	500	1,158
Summer Fallow		334	334
Totals	54,666	42,182	96,848
Irrigated acres for 2004 showed a reduction from previous years reflecting a substantial increase in the amount of precipitation.			

**PARCELS ADDED TO/REMOVED FROM
WESTERN IRRIGATION DISTRICT FISCAL 2004**

Name	Legal Description	Action
Risseeuw, Gerald & Mary	SW 26-23-23-W4	Add
705370 Alberta Ltd.	SW 17-26-26-W4	Add
Walker, Dale	SW 31-26-24-W4	Add
Bruce Farms Ltd.	NE 21-22-26-W4	Add
Thompson, Robert & Betty	SW 16-26-26-W4	Add
Green Acres Hutterian Brethren	SW 34-22-20-W4	Add
Risseeuw, Gerald & Mary	SW 22-23-22-W4	Remove
Risseeuw, Gerald & Mary	SW 35-23-23-W4	Remove
Risseeuw, Gerald & Mary	NW 22-22-23-W4	Remove
Risseeuw, Terry	NW 27-22-23-W4	Remove
Hendricks, Theresa	NE 08-26-24-W4	Remove
Thompson, Robert & Betty	NE 17-26-26-W4	Remove
Hagel, Joyce	SE 16-26-26-W4	Remove
Fulton, William & Connie	SW 34-25-23-W4	Remove
Corbiell, Joseph & Adella	SE 17-23-21-W4	Remove
Bateman, Beverly	SE 11-22-27 W4	Remove
Green Acres Hutterian Brethren	NW 29-22-20 W4	Remove
Green Acres Hutterian Brethren	NE 29-22-20 W4	Remove

**WESTERN IRRIGATION DISTRICT
ORGANIZATIONAL CHART
as of November 30, 2004**





WESTERN IRRIGATION DISTRICT

201 Pine Road, Strathmore, AB T1P 1C1 www.wid.net